

KINGS' SCHOOL **ACTIVITIES DAYS** **BROCHURE 2023**



Wednesday 19th July
Thursday 20th July

ACTIVITIES DAYS 2023

Following on from Activities Days in 2022, there is a slight change from last year. This year's activities will run on **Wednesday 19th July** and **Thursday 20th July**, Friday 21st will be a half day with all pupils being in school.

This pack contains a broad and balanced range of activities from which you and your child can choose. We are sure that our Activities Days will give your child the opportunity to work with staff and peers in an enriched, more relaxed and practical environment.

These amazing, sometimes life changing activities, are a very important part of our school curriculum and as such, full attendance is both essential and mandatory. Pupils who are absent will be processed through the normal attendance school policy.

Some trips and activities are specific to year groups.

The residential trips are year group specific.

Please see below for details of the activities on offer and then **complete through the parents evening booking system Sunday 19th February.**

ON-SITE DAY ACTIVITIES



MUSIC WORKSHOPS

Learn how to write songs and create them using new technologies such as iPads to mix, loop, synthesise and manipulate your music to become the next chart hit!

(WED/THURS) **Staff: CLK** **Cost: FREE**

MULTI-SPORTS

Come along and experience a day of sporting fun, choices of which sports will be made nearer the time but will include football, basketball, swimming, tennis and more!

(WED/THURS) **Staff: BCH/OSB** **Cost: FREE**



AFTERNOON TEA

This will be an action packed day for food lovers. The day will be divided into 3 sessions and at the end of the day you will take home 4 tea-time products: Scones, Jam, Lemon Curd and a Decorated Cake. You should be prepared to work hard, learn lots of new skills and take home some lovely goodies to impress your family and friends.

(WED/THURS) Staff: WRI Cost: £20



PHOTOGRAPHY

Whether you are a complete beginner or a keen photographer, spend the day learning new photography skills and techniques to develop your interest using the excellent equipment we have on-site such as the green room and SLR cameras.

(WED/THURS) Staff: PAL Cost: FREE

ENTERPRISE FUN

Spend the day creating and making a selection of your own personalised mugs, t-shirts, drinks bottles, iPad cases and/or keyrings to take home. You will have so much fun that you will certainly be inspired to start your own enterprise business!

(WED/THURS) Staff: BFD Cost: £15



MEDITERRANEAN CRAFT DAY

Spend the morning designing and making Venetian masks from papier mâché, acrylic paints and a variety of other materials. In the afternoon you will also make a Spanish fan. Snacks during the day are included!

(WED/THURS) Staff: HAY Cost: £12



HARRY POTTER ACTIVITY DAY

Spend the day immersed in the Harry Potter universe playing Quidditch, Potion making, t-shirt and wand design, magical creature care and Hogwarts's Escape room!

(WED/THURS) Staff: KNY Cost: £15

DOODLES AND BOARD GAMES

Come on down to the library for a day of doodling / anime sketching and board / card games (either bring your own or join our Chess / Scrabble games).

(WED/THURS) Staff: HAN/NIS Cost: FREE



ARCHERY— YEAR 7&8 ONLY

Ever wanted to be a bit more Robin Hood? - well now you can! Come and try your hand at archery, an ancient sport to help improve your aim!

(WED/THURS—YEAR 7&8 ONLY) Staff: SHN Cost: £5



ART— THE PAPERCRAFT STUDIO

During the activity day, we'll be making 4 projects including 2 interactive cards and 2 3D projects. All materials and step by step instructions will be given to make projects you'll be proud to take home. You'll learn how to use a die cutting machine, punches, stamps and colouring tools as well as building the 3D projects from scratch from pieces of card using scoring and cutting techniques, all finished off with coordinating embellishments. It's amazing how easy it is to make great projects with the right supplies and a little know how.

Type: Onsite (WED/THURS) staff: CRR Cost: £25

OFF-SITE DAY TRIPS

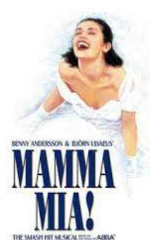
Please note that the cost for off-site day trips is subject to change depending on pupil numbers and availability of transport.

V&A DRAMA EXHIBITION AND THEATRE PERFORMANCE

Join us for a theatrical day out in London. Pupils will start their adventure at the Victoria and Albert museum, Kensington, where they will be able to explore the Performing Arts exhibitions, before experiencing their most recent Re:Imagining Musical theatre section. This display celebrates the glittering world of musical theatre, exploring the evolution and craftsmanship of iconic musicals.

Following this visit, we are delighted to be offering our pupils the opportunity to see a live musical theatre production. Depending on the date, pupils will either watch Frozen at the Theatre Royal, Drury Lane or Mamma Mia at the Novello theatre.

Type: Offsite (WEDTHURS) Staff: CEE Cost: £48



SOUTHAMPTON WATER ACTIVITY CENTRE—YEAR 9 ONLY

Two - day sailing course at Southampton Water Activity Centre on the river Itchen. This is a fantastic opportunity to gain the RYA sailing qualification Level 1. Please note - this is a Non-residential course. Pupils will be transported by bus to and from school on both days. Pupils must be able to swim 50m unaided.

Type: Offsite (WED/THURS) Staff: DUC/CMN Cost: £120

NEW FOREST AQUA PARK

Measuring in at an impressive 4,000sq meters, this floating, inflatable Aqua Park has 2 trampolines, monkey bars, flippers, slides, hurdles, springboard, rockers, rollers, an overhang climbing wall, a swing, a giant iceberg and much more! Come along for a day of watery-wipe-out fun.

Type: Offsite (WED/THURS) Staff: DMN/SPN Cost: £57





The Wave, Bristol

The Wave is an inland surfing destination born out of a passion for technology, nature and human health. At it's heart is an unbelievable surfing lake, with perfect wave, set in an incredible green space. Price includes included coach travel, equipment hire(surf board, wet suit etc) and 2 x 1.5 Hour surf Lessons (30 minutes on the beach instructions and 1 hour in the water)

Type: Offsite (WED/THURS) Staff:DDY Cost: £95

WOODMILL ACTIVITY CENTRE

There is no better place to participate in outdoor activity or find your next adventure than at Woodmill Outdoor Activity Centre. Our expert team will give you an experience like no other! Whether you fancy a paddle on The River Itchen, or you want to test your limits on an adrenaline-filled High Ropes Course...

Type: offsite (WED/THURS) Staff:LHD Cost: £49



HAWK CONSERVATORY TRUST

Whether it's the thrill of holding one of the rare birds of prey, watching world-class flying displays in one of the three display arenas, or simply meandering through the 22 acre grounds of woodland and wildflower meadow, staff at the conservatory want to share their love of birds of prey and encourage you to join in the mission to conserve them.

Type: offsite (WED/THURS) Staff: LEE/HCO Cost: £26

SEA CITY MUSEUM SOUTHAMPTON—YEAR 9 ONLY

Discover the story of RMS Titanic and how the tragedy affected the city and people of Southampton. Featuring an interactive model of the Titanic, recorded messages of its passengers of the fateful night, original objects from on board the world-famous ship and more!

Type: Offsite (WED/THURS) Staff: JON Cost: £27



JANE AUSTEN'S HOUSE



A school visit to Jane Austen's House is the perfect way to bring the world of Jane Austen and her novels alive for students, making the shades of Pemberley Park feel relevant and engaging. The House offers a range of options for school and educational group visits. We hope that this visit to Jane Austen's House will expand students' knowledge and appreciation of cultural capital by introducing them to her world, her words, and her ideas. Above all, we hope that it will inspire a genuine admiration for the creativity and inspiration of this pioneer of nineteenth century literature.

Type: Offsite (WED/THURS) Staff: POP Cost: £32

WINCHESTER SCIENCE CENTRE

Set off on an exhilarating journey through the world of science, technology, engineering and maths. Winchester Science Centre, the south of England's leading science and discovery centre, is part of the independent educational charity, Wonderseekers, who are on a mission to inspire and engage all children in science.

Type: Offsite (WED/THURS) Staff: HNT Cost: £26



Year Group Residential Trips

Please note that the cost for the residential trips are subject to change depending on pupil numbers and availability of transport.

YEAR 7 ONLY — FOXLEASE, LYNDHURST



Pupils will be offered the exciting opportunity to stay in the heart of the New Forest and experience multiple land and water-based group activities across two days of a residential visit. The trip is strictly limited to 80 pupils due the capacity of our provider, so ensure you get in quick to avoid missing the boat. Pupils will stay in small lodges with camp beds, and they will be expected to maintain their dormitories, social areas and may even be asked to cook for themselves as we become one with nature! Pupils will need an overnight camping bag including sleeping bag and swimwear to wear underneath the wetsuits provided. The trip is inclusive of travel, accommodation, activities and food!

Type: Offsite (WED/THURS) Staff: MRW Cost: £200

YEAR 8 ONLY— THE BUSHCRAFT COMPANY, OXFORDSHIRE

Arriving at one of the safari-style tented camps, pupils will become fully enveloped in the wilderness, sleeping under the stars, and cooking over open fires. Away from screens and technology, activities encourage team building and give pupils the chance to develop new skills and interact with their peers in a fun, creative environment. Whether they are learning first-aid techniques, building shelters or tackling a SOS scenario, our outdoor adventures are as real as you can get.



Type: Offsite (TUES/WED/THURS) Staff: CKN Cost: £225

YEAR 9 ONLY– LAND AND WAVE



Two and half days of fun filled activities by the sea with Land & Wave. By day we will be taking part in team building activities, woodland activities including shelter and fire building, kayaking, paddle boarding during our beach day and coasteering on our final morning, hurling yourself into the sea, exploring caves and playing in the swell. By night glamping at the private, secluded campsite that has great views over Corfe Castle.

Type: Offsite(TUES/WED/THURS)Staff: WOD Cost: £240

All on-site and off-site activities do have a maximum capacity for pupils. If there is a trip or activity that you want to do we suggest that complete your choices through the parents evening booking system ASAP to give your self the best chance of having the activities you want.